



■ ARBOR



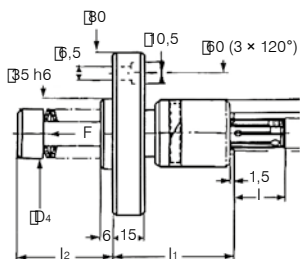
■ EXPANDING SLEEVE



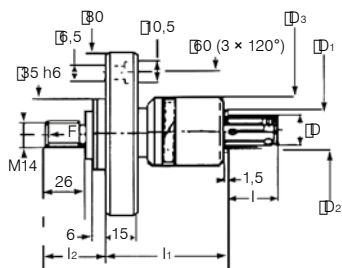
1 daN = 10 N

Subject to technical changes.
For more detailed information,
please ask our customer service.

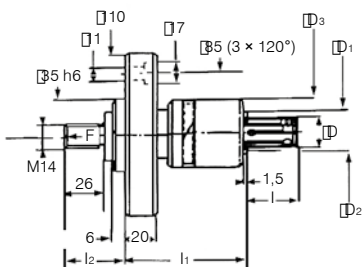
TMTPN-1 / TMTPN-2
TMTPN-3 / TMTPN-4



TMTPN-5



TMTPN-6 / TMTPN-7
TMTPN-8 / TMTPN-9



Order Code	D ₁	D ₂	D ₃	D ₄	l ₁	Minimum / Maximum, l ₂	Maximum Force on Driving Screw F (daN)	Order Code	Workpiece Diameter Range D	l	Expansibility
TMTPN-1	10,8	8,5	24	20	57	40,0 / 45,5	144 (Force maximale : 70 daN)	TNS55-1 TNS60-1 TNS65-1 TNS70-1	5,5 - 7,5	12,0	0,5
TMTPN-2	13,8	10,5	26	23	61	40,0 / 45,5	235 (Force maximale : 130 daN)	TNS75-2 TNS80-2 TNS85-2 TNS90-2	7,5 - 9,5	16,0	0,5
TMTPN-3	16,8	13,2	28	23	61	40,0 / 45,5	235 (Force maximale : 130 daN)	TNS95-3 TNS100-3 TNS105-3 TNS110-3 TNS115-3	9,5 - 12,0	20,0	0,5
TMTPN-4	20,8	16,0	32	25	63	47,0 / 52,5	298 (Force maximale : 150 daN)	TNS120-4 TNS125-4 TNS130-4 TNS135-4 TNS140-4 TNS145-4	12,0 - 15,0	26,0	0,5
TMTPN-5	26,8	21,0	42		73	38,0 / 43,5	400	TNS145-5 TNS150-5 TNS155-5 TNS160-5 TNS165-5 TNS170-5 TNS175-5 TNS180-5 TNS185-5 TNS190-5	14,5 - 19,5	30,0	0,5
TMTPN-6	31,8	26,0	56		85	38,0 / 43,5	500	TNS195-6 TNS200-6 TNS205-6 TNS210-6 TNS215-6 TNS220-6 TNS225-6 TNS230-6 TNS235-6 TNS240-6 TNS245-6	19,5 - 25,0	36,0	0,5
TMTPN-7	36,8	31,0	56		89	38,0 / 44,0	800	TNS247-7 TNS257-7 TNS267-7 TNS277-7 TNS287-7	24,7 - 29,7	42,5	1,0
TMTPN-8	41,8	36,0	66		89	38,0 / 44,0	800	TNS297-8 TNS307-8 TNS317-8 TNS327-8 TNS337-8	29,7 - 34,7	46,0	1,0
TMTPN-9	47,8	41,0	66		91	38,0 / 44,0	800	TNS347-9 TNS357-9 TNS367-9 TNS377-9 TNS387-9	34,7 - 39,7	52,5	1,0

When placing an order, please specify the order code and Dimensions quantity. (mm)

Note: For details on the flange adaptor for mounting to the spindle nose, see page 33.

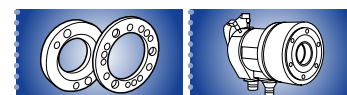
Note: For all of the TMTPN mandrels there are both old and new types for TMTPN-1 through TMTPN-5.

Other types can be made to order.

TMTPN-1 to 4:
Clamping by spring

TMTPN-5 to 9:
Clamping by drawbar

Dimensions (mm)



Expanding Mandrels with pull-down sleeves



TMTPN

tabler

Expanding Mandrels TOBLER

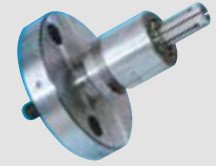
■ Clamping range Ø39,7 to 79,7 mm



■ ARBOR

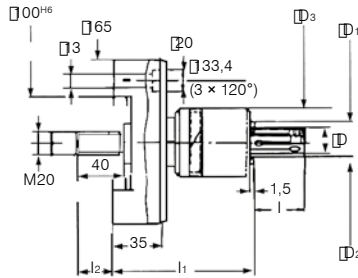


■ EXPANDING SLEEVE



Subject to technical changes.
For more detailed information,
please ask our customer service.

1 daN = 10 N



Order Code	D ₁	D ₂	D ₃	D ₄	l ₁	Minimum / Maximum, l ₂	Maximum Force on Driving Screw F (daN)	Order Code	Workpiece Diameter Range, D	l	Expansibility
TMTPN-10	52,8	46,0	84		120	30 / 36	1.200	TNS397-10 TNS407-10 TNS417-10 TNS427-10 TNS437-10	39,7 - 44,7	58,0	1
TMTPN-11	61,8	55,5	84		120	30 / 36	1.200	TNS447-11 TNS457-11 TNS467-11 TNS477-11 TNS487-11 TNS497-11 TNS507-11 TNS517-11 TNS527-11 TNS537-11	44,7 - 54,7	76,5	1
TMTPN-12	71,8	65,5	112		126	30 / 36	1.200	TNS547-12 TNS557-12 TNS567-12 TNS577-12 TNS587-12 TNS597-12 TNS607-12 TNS617-12 TNS627-12 TNS637-12	54,7 - 64,7	85,0	1
TMTPN-13	90,8	83,0	112		126	30 / 36	1.200	TNS647-13 TNS657-13 TNS667-13 TNS677-13 TNS687-13 TNS697-13 TNS707-13 TNS717-13 TNS727-13 TNS737-13 TNS747-13 TNS757-13 TNS767-13 TNS777-13 TNS787-13	64,7 - 79,7	96,0	1

When placing an order, please specify the order code and quantity.

Dimensions (mm)

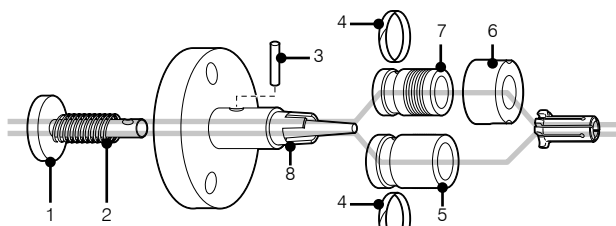
TMTPN-10 to 13:
Clamping by drawbar

Dimensions (mm)

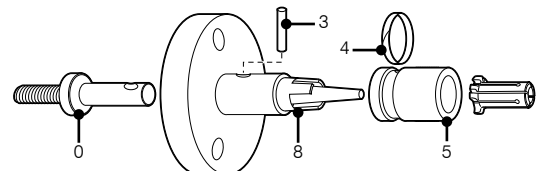
■ nEquipment that fits directly to A1-6" can be made to order.

Spare parts

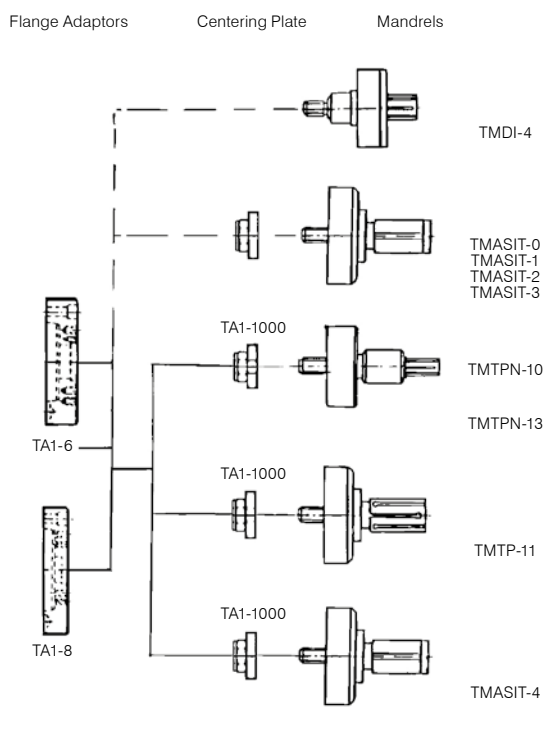
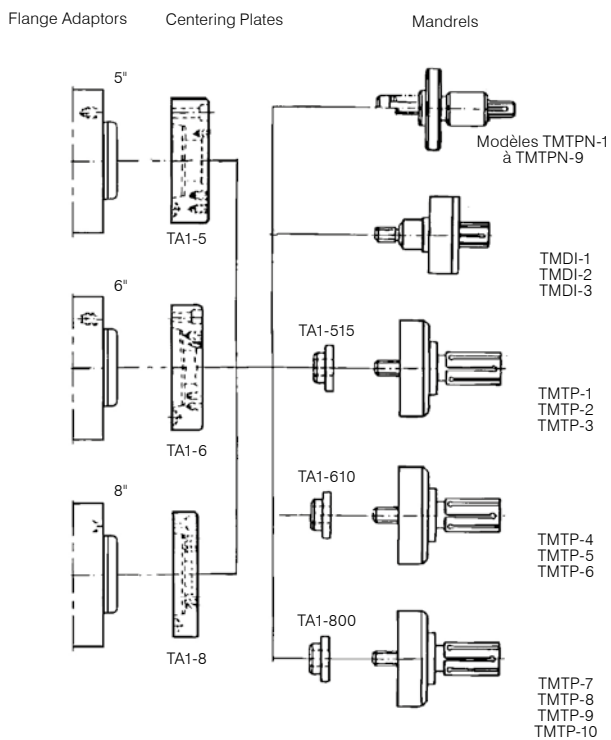
Standard	0	1	2	3	4	5	6	7	8
Arbor TMDI									
Standard mandrel	Drawbar Connector	Drawbar with Spring	Spring	Connecting Pin	Locking Ring	Driving Ring	Locking Ring	Driving Ring	Workstop
TMTPN-13 TMTPN-23 TMTPN-33 TMTPN-43	-	TMTPN-01 TMTPN-21 TMTPN-31 TMTPN-41	TMTPN-12 TMTPN-22 TMTPN-32 TMTPN-42	TMTPN-14 TMTPN-24 TMTPN-34 TMTPN-44	TMTPN-16 TMTPN-26 TMTPN-36 TMTPN-46	TMTPN-17 TMTPN-27 TMTPN-37 TMTPN-47	TMTPN-1EC TMTPN-2EC TMTPN-3EC TMTPN-4EC	TMTPN-1BF TMTPN-2BF TMTPN-3BF TMTPN-4BF	TNW-1 TNW-2 TNW-3 TNW-4
TMTPN-53 TMTPN-63 TMTPN-73 TMTPN-83 TMTPN-93 TMTPN-103 TMTPN-113 TMTPN-123 TMTPN-133	TMTPN-50 TMTPN-60 TMTPN-70 TMTPN-80 TMTPN-90 TMTPN-100 TMTPN-110 TMTPN-120 TMTPN-130	-	-	TMTPN-54 TMTPN-64 TMTPN-74 TMTPN-84 TMTPN-94 TMTPN-104 TMTPN-114 TMTPN-124 TMTPN-134	TMTPN-56 TMTPN-66 TMTPN-76 TMTPN-86 TMTPN-96 TMTPN-106 TMTPN-116 TMTPN-126 TMTPN-136	TMTPN-57 TMTPN-67 TMTPN-77 TMTPN-87 TMTPN-97 TMTPN-107 TMTPN-117 TMTPN-127 TMTPN-137	-	-	TNW-5 TNW-6 TNW-7 TNW-8 TNW-9 TNW-10 TNW-11 TNW-12 TNW-13



TMTPN 1 - 4

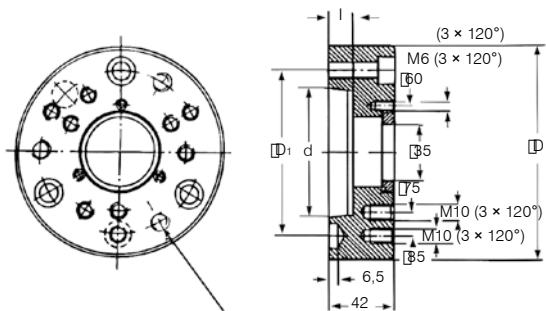


TMTPN 5 - 13



Subject to technical changes.
For more detailed information, please ask our customer service.

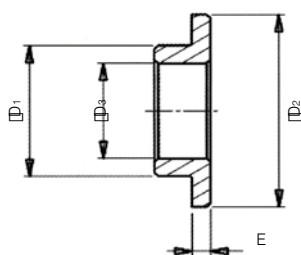
Flange adaptors for spindle nose mounting



Order Code	Spindle Noze Type	D	D ₁	d	l
TA1-5	5	135	104,8	82,58	16
TA1-6	6	165	133,4	106,39	18
TA1-8	8	220	171,4	139,735	20

When placing an order, please specify the order code and quantity. Dimensions (mm)
Note: TA1-8, TMASIT-0 to 3, and other flange adaptors are made to order.

Centering plates for mandrels



Order Code	D ₁	D ₂	D ₃	E
TA1-515	35	51,5	25,5	5
TA1-610	35	61,0	25,5	5
TA1-800	35	80,0	25,5	5
TA1-1000	35	100,0	25,5	17

Dimensions (mm)

