

TMEP

Pages 12 and 13

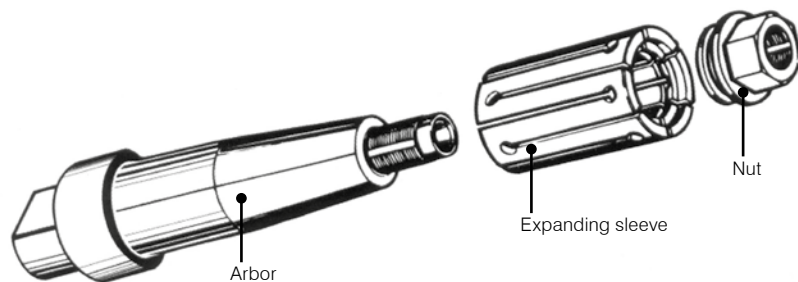
TMEP mandrels are intended for turning, milling, grinding, shaving, gear cutting and inspection operations.

You can use a variety of types of workstop that are matched to the shape of the workpiece. They offer an expansibility of 1 to 2 mm depending on the diameter of the expanding sleeve, and can clamp workpieces with diameters ranging from 14.7 to 101.7 mm.



Clamping takes place as follows:

On tightening the nut that is coupled with the expanding sleeve, the expanding sleeve moves over the tapered arbor, clamping the workpiece.

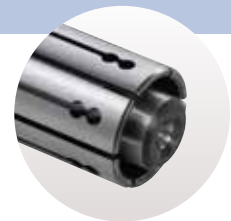


When placing an order for arbors and expanding sleeves, please provide the order codes individually. They will be shipped without being assembled.

Standard line-up

- EP: Expanding sleeve type TEP mandrels
Feature substantial expansibility and are used for inspections and grinding.
- M: Expanding sleeve type M mandrels (TMEP, TMCM, TMCMT, TMTP)
Feature high clamping torque and are used for general machining.
- N: Expanding sleeve type N mandrels (TEPN, TMCMN, TMTPN)
This is a series that can hold workpieces with the smallest diameter upward.
- MDI: Expanding sleeve type MDI mandrels (TMDI)
The workpiece does not move in the axial direction during expansion.
- MIT: Expanding sleeve type TMASIT mandrels
Suitable for medium to large lot production.

Internal clamping
Total permissible error for internal clamping:
0.01 mm (T.I.R.)



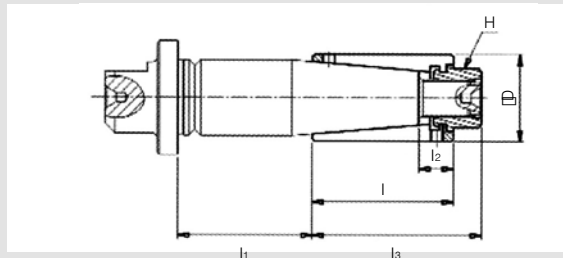
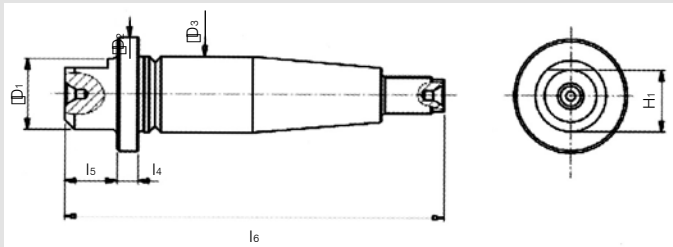
For M, N, and MDI type mandrels
Vulcanization of the coating of the expanding sleeve grooves, nickel coating of the expanding sleeve, etc. are available as options
Mandrels able to accommodate large-diameter workpieces, and mandrels of a length or shape specified by the customer can be made to order



■ ARBOR



■ EXPANDING SLEEVE (1)



Subject to technical changes.
For more detailed information, please ask our customer service.

Order Code	Workpiece Diameter Range	D ₁	D ₂	D ₃	H ₁	l ₄	l ₅	l ₆	kg
TMEP-1	14,7 - 19,7	13	23	15	11	6	8	95	0,094
TMEP-2	19,7 - 24,7	18	30	20	16	6	8	95	0,165
TMEP-3	24,7 - 29,7	20	36	24	18	6	18	125	0,350
TMEP-4	29,7 - 34,7	20	42	28	18	6	18	125	0,450
TMEP-5	34,7 - 39,7	30	48	32	26	9	22	160	0,850
TMEP-6	39,7 - 44,7	30	55	37	26	9	22	160	0,962
TMEP-7	44,7 - 54,7	35	62	42	31	9	24	200	1,650
TMEP-8	54,7 - 64,7	35	72	52	31	9	24	200	2,150
TMEP-9	64,7 - 82,7	55	82	62	50	9	24	270	4,805

When placing an order, please specify the order code and quantity. Dimensions (mm)

Order Code	D	H	l	l ₁	l ₂ ²⁾	l ₃	Expansibility	Maximum Torque Nm
TMEP147-1 TMEP157-1 TMEP167-1 TMEP177-1 TMEP187-1	14,7 15,7 16,7 17,7 18,7	11	35	38	12,0	43	1	15
TMEP197-2 TMEP207-2 TMEP217-2 TMEP227-2 TMEP237-2	19,7 20,7 21,7 22,7 23,7	11	40	33	14,0	48	1	35
TMEP247-3 TMEP257-3 TMEP267-3 TMEP277-3 TMEP287-3	24,7 25,7 26,7 27,7 28,7	17	46	46	14,5	55	1	75
TMEP297-4 TMEP307-4 TMEP317-4 TMEP327-4 TMEP337-4	29,7 30,7 31,7 32,7 33,7	17	50	42	14,5	59	1	100
TMEP347-5 TMEP357-5 TMEP367-5 TMEP377-5 TMEP387-5	34,7 35,7 36,7 37,7 38,7	22	60	57	14,5	72	1	120
TMEP397-6 TMEP407-6 TMEP417-6 TMEP427-6 TMEP437-6	39,7 40,7 41,7 42,7 43,7	22	60	57	15,5	72	1	150
TMEP447-7 TMEP467-7 TMEP487-7 TMEP497-7 TMEP507-7 TMEP527-7	44,7 46,7 48,7 49,7 50,7 52,7	27	80	72	22,5	95	2	200
TMEP547-8 TMEP567-8 TMEP587-8 TMEP597-8 TMEP607-8 TMEP627-8	54,7 56,7 58,7 59,7 60,7 62,7	27	90	62	24,5	105	2	250
TMEP647-9 TMEP667-9 TMEP687-9 TMEP697-9 TMEP707-9 TMEP727-9 TMEP747-9 TMEP767-9 TMEP787-9 TMEP807-9	64,7 66,7 68,7 69,7 70,7 72,7 74,7 76,7 78,7 80,7	36	100	119	24,5	118	2	275

1) The expanding sleeve is shipped with the nut fitted. Dimensions (mm)
2) Do not clamp in the range l₂.
When placing an order, please specify the order code and quantity.



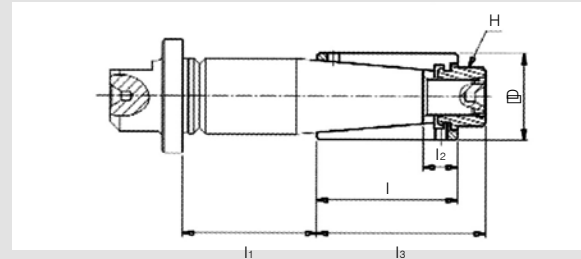
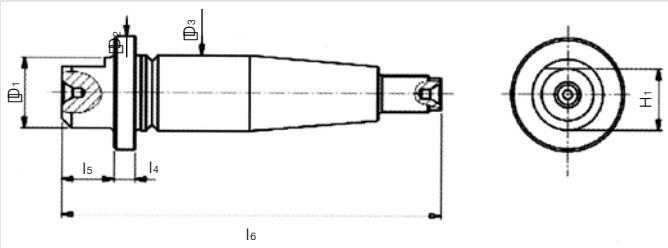
■ Clamping range Ø81,7 to 101,7 mm



■ ARBOR



■ EXPANDING SLEEVE (1)



Subject to technical changes.
For more detailed information, please ask our customer service.

Order Code	Workpiece Range Diameter	D ₁	D ₂	D ₃	H ₁	l ₄	l ₅	l ₆	kg
TMEP-10	81,7-101,7	55	95	75	50	9	24	270	6,600

When placing an order, please specify the order code and quantity. Dimensions (mm)

Ask for quotations for price and delivery of TMEP-10.

Order Code	D	H	l	l ₁	l ₂ ²⁾	l ₃	Expansibility	Maximum Torque Nm
TMEP817-10	81,7							
TMEP837-10	83,7							
TMEP857-10	85,7							
TMEP877-10	87,7							
TMEP897-10	89,7	36	122	97	26,5	140	2	320
TMEP917-10	91,7							
TMEP937-10	93,7							
TMEP957-10	95,7							
TMEP977-10	97,7							
TMEP997-10	99,7							

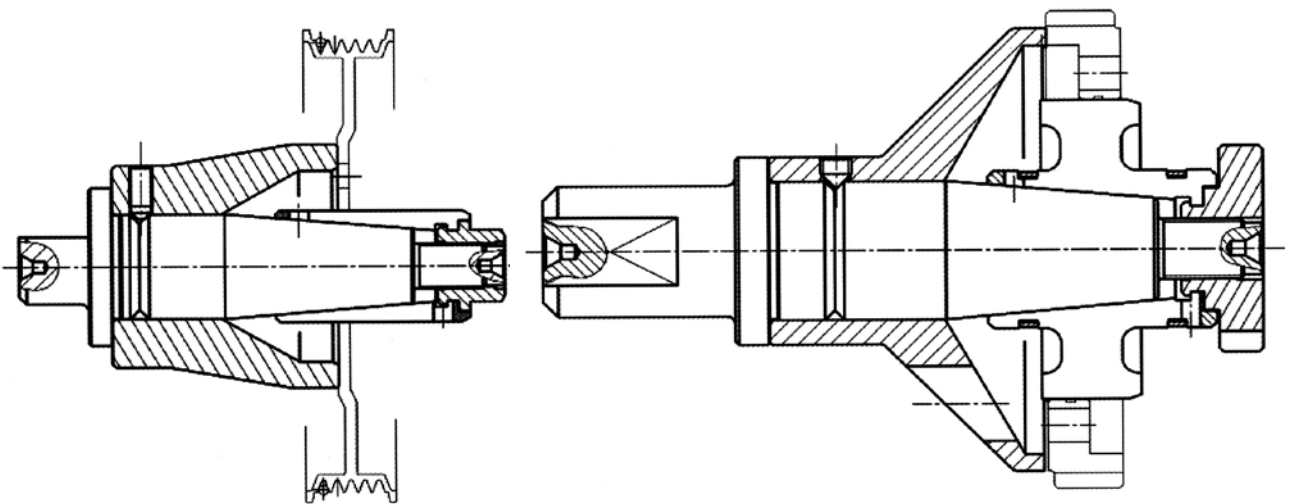
1) The expanding sleeve is shipped with the nut fitted. Dimensions (mm)

2) Do not clamp in the range l₂.

When placing an order, please specify the order code and quantity.

Example application

Inspection / grinding



When using the standard expanding sleeve and a special workstop

When using a special expanding sleeve and a special workstop