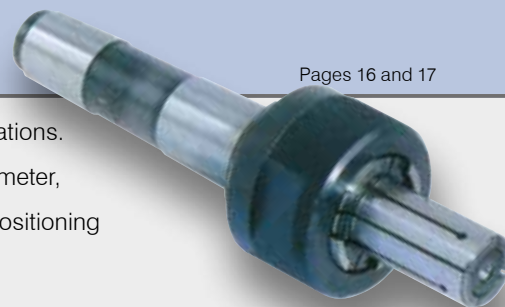


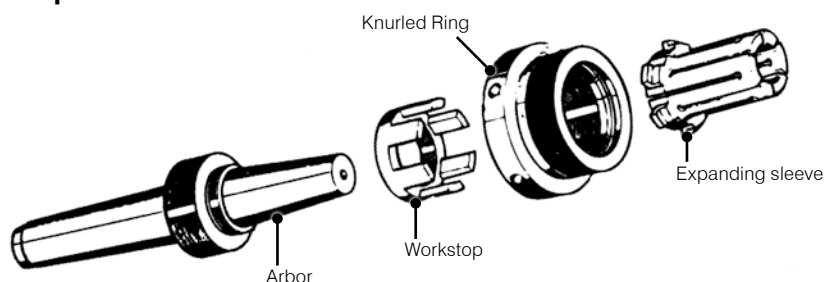
TMCMN

Pages 16 and 17



TMCMN mandrels are designed for turning, milling, grinding and inspection operations. They offer expansibility from 0.5 to 1 mm depending on the expanding sleeve diameter, and can clamp workpieces with diameters from 5.5 to 79.7 mm. A workstop for positioning the workpiece in the axial direction is included. They can be used for clamping workpieces with a blind hole or short workpieces.

Clamping take place as follows:



The expanding sleeve can be used in common with TEPN

When placing an order for arbors and expanding sleeves, please provide the order codes individually. They will be shipped without being assembled.

TMCM

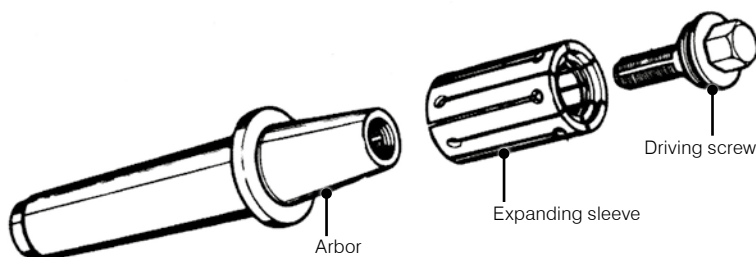
Pages 18



TMCM mandrels are intended for turning, milling, grinding, gear hobbing, balancing, and inspection operations. The workpiece is positioned axially either by the workstop or a spacer. Expansibility is from 1 to 2 mm, depending on the diameter of the expanding sleeve. Workpieces with diameters from 14.7 to 82.7 mm can be clamped.

Clamping takes place as follows:

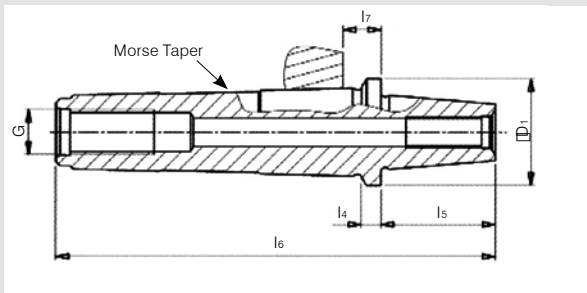
The workpiece is inserted into the expanding sleeve from the front and the driving screw is tightened using a wrench. The workpiece is clamped when the expanding sleeve is pushed up onto the tapered arbor by tightening the driving screw.



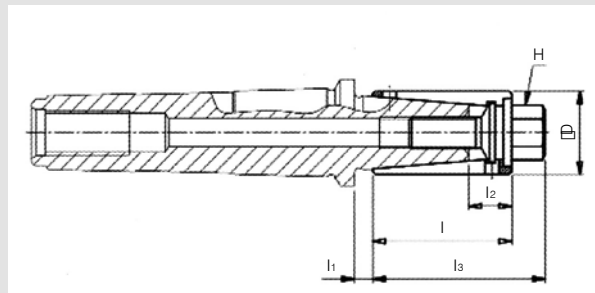
When placing an order for arbors and expanding sleeves, please provide the order codes individually. They will be shipped without being assembled.



■ ARBOR



■ EXPANDING SLEEVE (1)



Subject to technical changes.
For more detailed information, please ask our customer service.

Order Code	Workpiece Diameter Range	Morse Taper N°	D ₁	l ₄	l ₅	l ₆	l ₇	G	kg
TMCM-1×3	14,7 - 19,7	3	24,5	-	29,0	115,0	5,0	M12	0,232
TMCM-1×4		4	32,0	-		138,0	6,5	M16	0,485
TMCM-2×3	19,7 - 24,7	3	28,0	5	32,0	123,0	10,0	M12	0,280
TMCM-2×4		4	32,0	-		141,0	6,5	M16	0,517
TMCM-3×3	24,7 - 29,7	3	33,0	8	38,0	132,0	13,0	M12	0,316
TMCM-3×4		4		7		154,0	13,5	M16	0,576
TMCM-4×4	29,7 - 34,7	4	38,0	7	41,0	157,0	13,5	M16	0,646
TMCM-5×4	34,7 - 39,7	4	43,0	8	50,0	167,0	14,5	M16	0,757
TMCM-6×4	39,7 - 44,7	4	48,0	9	50,0	168,0	15,5	M16	0,840
TMCM-7×4	44,7 - 54,7	4	58,0	9	67,0	185,0	15,5	M16	1,118
TMCM-8×4	54,7 - 64,7	4	68,0	12	75,0	196,0	18,5	M16	1,792
TMCM-9×4	64,7 - 82,7	4	86,0	14	85,5	208,5	20,5	M16	2,260

Order Code	D	H	l	l ₁	l ₂ ²⁾	l ₃	Expansibility	Maximum Torque Nm
TMCM147-1 TMCM157-1 TMCM167-1 TMCM177-1 TMCM187-1	14,7 15,7 16,7 17,7 18,7	8	35	6,5	12,5	44	1	15
TMCM197-2 TMCM207-2 TMCM217-2 TMCM227-2 TMCM237-2	19,7 20,7 21,7 22,7 23,7	11	40	6,5	14,5	49	1	35
TMCM247-3 TMCM257-3 TMCM267-3 TMCM277-3 TMCM287-3	24,7 25,7 26,7 27,7 28,7	13	46	6,5	14,5	56	1	75
TMCM297-4 TMCM307-4 TMCM317-4 TMCM327-4 TMCM337-4	29,7 30,7 31,7 32,7 33,7	17	50	6,5	15,5	62	1	100
TMCM347-5 TMCM357-5 TMCM367-5 TMCM377-5 TMCM387-5	34,7 35,7 36,7 37,7 38,7	17	60	6,5	16,5	72	1	120
TMCM397-6 TMCM407-6 TMCM417-6 TMCM427-6 TMCM437-6	39,7 40,7 41,7 42,7 43,7	19	60	6,5	16,5	74	1	150
TMCM447-7 TMCM467-7 TMCM487-7 TMCM497-7 TMCM507-7 TMCM527-7	44,7 46,7 48,7 49,7 50,7 52,7	22	80	12,0	25,0	95	2	200
TMCM547-8 TMCM567-8 TMCM587-8 TMCM597-8 TMCM607-8 TMCM627-8	54,7 56,7 58,7 59,7 60,7 62,7	27	90	12,0	27,0	98	2	275
TMCM647-9 TMCM667-9 TMCM687-9 TMCM697-9 TMCM707-9 TMCM727-9 TMCM747-9 TMCM767-9 TMCM787-9 TMCM807-9	64,7 66,7 68,7 69,7 70,7 72,7 74,7 76,7 78,7 80,7	32	100	12,0	26,5	120	2	320

When placing an order, please specify the order code and quantity. Dimensions (mm)
 Ask for quotations for price and delivery of TMCM-8 and TMCM-9.

1) The expanding sleeve is shipped with the driving screw fitted. Dimensions (mm)
 2) Do not clamp in the range l₂.
 When placing an order, please specify the order code and quantity..